



Diabetic Foot Ulcers

Here's an update on
one of the most
dangerous conditions
treated by podiatrists.

BY WINDY COLE, DPM

Goals and Objectives

After reading this article the podiatric physician will be able to:

- 1) Recognize the severity of the diabetes epidemic in the podiatric patient population
- 2) Learn about the best practices for diabetic foot ulcers
- 3) Become competent in clinical decision-making and charting diabetic foot ulcers appropriately
- 4) Become familiar with effective wound healing techniques
- 5) Denote the differences among wound care products
- 6) Understand the importance of an integrated wound care approach
- 7) Successfully incorporate diabetic foot wound care strategies to achieve optimal healing for patients

Welcome to Podiatry Management's CME Instructional program. Podiatry Management Magazine is approved by the Council on Podiatric Medical Education as a provider of continuing education in podiatric medicine. Podiatry Management Magazine has approved this activity for a maximum of 1.5 continuing education contact hours. This CME activity is free from commercial bias and is under the overall management of Podiatry Management Magazine.

You may enroll: 1) on a per issue basis (at \$27.00 per topic) or 2) per year, for the special rate of \$219 (you save \$51). You may submit the answer sheet, along with the other information requested, via mail, fax, or phone. You can also take this and other exams on the Internet at www.podiatrym.com/cme.

If you correctly answer seventy (70%) of the questions correctly, you will receive a certificate attesting to your earned credits. You will also receive a record of any incorrectly answered questions. If you score less than 70%, you can retake the test at no additional cost. A list of states currently honoring CPME approved credits is listed on pg. 164. Other than those entities currently accepting CPME-approved credit, Podiatry Management cannot guarantee that these CME credits will be acceptable by any state licensing agency, hospital, managed care organization or other entity. PM will, however, use its best efforts to ensure the widest acceptance of this program possible.

This instructional CME program is designed to supplement, NOT replace, existing CME seminars. The goal of this program is to advance the knowledge of practicing podiatrists. We will endeavor to publish high quality manuscripts by noted authors and researchers. If you have any questions or comments about this program, you can write or call us at: **Program Management Services, P.O. Box 490, East Islip, NY 11730, (631) 563-1604 or e-mail us at bblock@podiatrym.com.**

Following this article, an answer sheet and full set of instructions are provided (pg. 164).—Editor

Characteristics and Causes

Diabetes affects 29.1 million Americans and this number is on the rise. Diabetics have a 25% lifetime incidence of foot ulcers with a 28-51% five year recurrence rate.¹ Diabetes mellitus is a metabolic disease characterized by impaired glucose metabolism resulting in higher than normal glucose levels in the body. This condition occurs due to cells failing to produce insulin or lacking the response to insulin, or both. High blood glucose levels have been attributed to damage of

**Diabetics have a 25% lifetime incidence of foot ulcers
with a 28-51% five year recurrence rate.¹**

neurons, causing a decrease in the ability of nerve fibers to transmit adequate signals.² The paucity of properly functioning nerve fibers may result in lack of sensation in these patients, resulting in a condition referred to as sensory neuropathy. Damage to nerve fibers can also result in autonomic neu-

ropathy, which interferes with the body's ability to regulate involuntary functions such as sweating and blood flow, especially in the lower extremity.

High glucose levels can eventually result in weakening of the walls of small blood vessels, impairing

Continued on page 158

Ulcers (from page 157)

their ability to deliver essential components such as oxygen and nutrients to distal tissues. The etiology of diabetic foot ulcers usually is multifactorial.^{3,5} The vast majority of diabetic foot ulcers can be directly attributed to the debilitating triad of peripheral neuropathy, vascular compromise, and increased plantar pressures due to structural deformities. Although infection is not commonly an etiology in diabetic foot ulcers, it is a common occurrence because these wounds typically contain areas of necrosis, increased bioburden, and are prone to bacterial contamination due to the immunocompromised state of the patient.^{3,5} These risk factors for foot ulcers are also predisposing components leading to amputations. 85% of all amputations are a direct result of diabetic foot ulcers.¹

Steps to Diagnosis

A thorough evaluation of the patient with any ul-

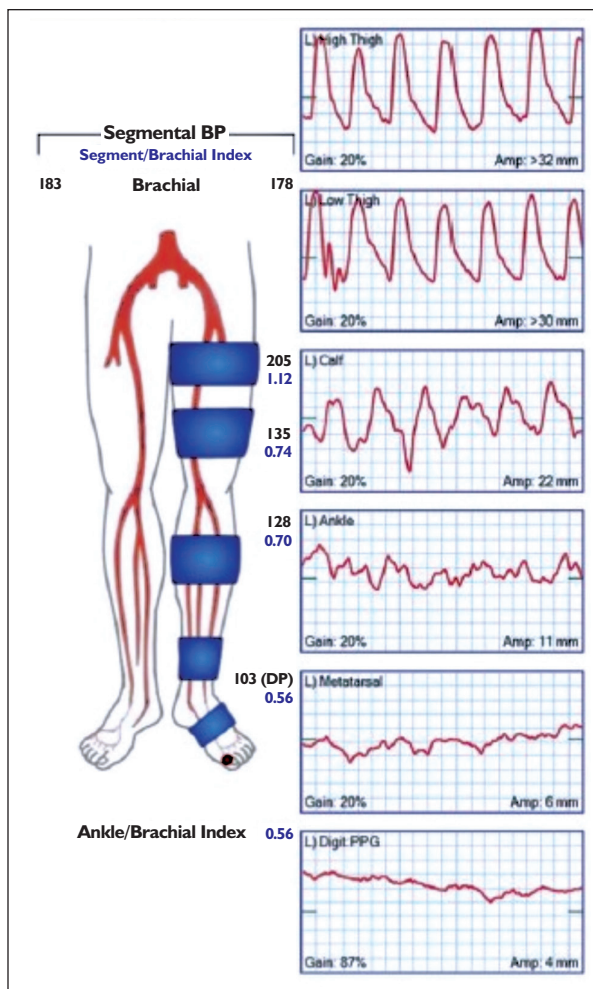


Figure 1: Ankle Brachial Index (ABI)

A tuning fork and neurologic hammer are also useful tools in determining the level of protective sensation in these patients. Decreased vascular perfusion potentiates a poor prognosis for healing of these wounds. Diminished or absent palpable pedal pulses are a common finding in diabetics because of the involvement of peripheral arterial disease found in the tibial arteries below the knee.⁷ Non-invasive arterial Doppler studies should be utilized in evaluation of vascular perfusion. Obtaining an ankle brachial index (ABI) reading to determine vascular perfusion in the affected extremity is a very helpful value. An ABI is performed by measuring blood pressure at the ankle and the arm while the patient is at rest. A normal ABI is 1.0-1.4. Abnormal values below 0.9 indicate that there is a higher chance of having peripheral arterial disease (Figure 1).⁸ Pulse volume recordings (PVRs) of the digits are also a powerful tool in ascertaining distal perfusion. A timely vascular surgical consultation is essential

when there is significant suspicion of ischemia.

Systemic Markers

Systemic markers of diabetic disease are important to notate and follow in these patients. Hemoglobin A1C is a useful lab value to determine the long-term effectiveness of the patient's glucose control. This lab value measures the level of blood glucose over the past three months. The normal range of A1C is 4-5.6%. Optimization of this marker can be essential for healing in diabetic wounds. BUN and creatinine levels should also be evaluated to identify patients at risk for chronic kidney disease. Kidney disease is associated with a fourfold higher risk of diabetic foot complications such as infection, ulcer, gangrene, or amputation.⁹

Continued on page 159

The vast majority of diabetic foot ulcers can be directly attributed to the debilitating triad of peripheral neuropathy, vascular compromise, and increased plantar pressures due to structural deformities.

ceration is crucial and will often aid in directing the care and management of these wounds. It is essential to adequately describe the ulcer characteristics such as size, depth, appearance of the wound base, and presentation of the peri-wound skin, as well as ulcer location. These observations serve as an essential guide to track wound progress during healing. The etiology of the wound is also an essential component in formulating an effective healing plan for these pa-

tients. It is important to determine if these lesions are simply neuropathic, ischemic, or neuro-ischemic. A Semmes-Weinstein 10g monofilament is an inexpensive and repeatable instrument that can be utilized to measure diminishing cutaneous sensation. To maximize the diagnostic value of the monofilament evaluation, a systematic three-site test composed of the plantar aspects of the great toe, the third metatarsal, and the fifth metatarsal should be used.⁶

THE DIABETIC FOOT

Ulcers (from page 158)

Patients with co-existing diabetes and kidney disease are 10 times greater than in the general diabetic population to have a lower extremity amputation.¹⁰ Vascular insufficiency is three times more prevalent in individuals with kidney disease, and the severity of peripheral vascular disease worsens with increased severity of kidney disease.¹¹ Albumin and pre-albumin values can help assess nutritional deficits in the patient. This is an often overlooked but essential part of the healing cascade. Wound healing requires 30-35 kcal/kg a day to optimize healing.¹² Identifying these patients and subsequent recommendation of proper referrals for nutritional management can then be instrumental in potentiating healing.

Examination

Examination of an ulceration should include not only obtaining measurements of length, width, and depth, but also probing the wound base and circumference with a blunt

in most instances of recalcitrant long-standing ulcerations to screen for osteomyelitis. Delays in diagnosing osteomyelitis often cause failure of wound healing. Radiographs are not the most sensitive

Nutritional deficits can effect wound healing and need to be bothered screening for.

sterile instrument. Gentle probing of the area can detect sinus track formation, undermining of ulcer margins, and expose deep tissue structures such as tendons, muscle, and bone. A positive probe to bone finding has been associated with an increased predictive value for osteomyelitis.¹³ Don't overlook the importance of

evaluating wound drainage to include the amount, color, and any associated odor present. The presence and extent of cellulitis, abscess, or fluctuance around the wound should be noted. In cases where cellulitis extends beyond 2cm from the ulcer perimeter, large abscess formation is present, or markers of osteomyelitis as exposed bone are noted, a limb-threatening infection is present.¹⁴

In such cases, aerobic and anaerobic cultures should be obtained. Polymicrobial infections predominate diabetic foot wounds and therefore, culturing non-infected wounds is not recommended. Cultures of deep purulent discharge or curetted material from the wound base with clinical suspicions of infection are optimal. Radiographs should be obtained

indicator of bone infection and can be falsely positive in the presence of Charcot's arthropathy.

In cases where clinical suspicion suggests osteomyelitis, bone leukocyte scanning or magnetic resonance imaging are more specific screening tools.¹⁵ Appropriate referrals to infectious disease specialists for intravenous antibiotic management, hyperbaric oxygen therapy, and surgical interventions may be employed to treat osteomyelitis when present.

Wound Classification

Utilizing classification systems in medical conditions is a useful method for aiding in the formulation of a logical treatment plan and can serve as a good predictor of clinical outcomes. The most widely accepted classification system for diabetic foot ulcers is the Wagner classification system (Figure 2). The basis of this system is the extent of the wound depth and the extent of tissue necrosis.

Documentation and Coding

Documentation of diabetic wounds should always include wound measurements upon presentation at every wound care visit. If a debridement is performed, the type of debridement, instrument used, depth of tissue removed, character of the wound bed pre and post-debridement, amount of bleeding that occurred, how the patient tolerated the procedure, and the post-debridement wound measurements must all be recorded. As was mentioned earlier, drainage amount, character, and odor are also essential notable findings.

Continued on page 160

FIGURE 2: Wagner Ulcer Classification System

Grade	Lesion
0	No open lesions; may have deformity or cellulitis
1	Superficial diabetic ulcer (partial or full thickness)
2	Ulcer extension to ligament, tendon, joint capsule, or deep fascia without abscess or osteomyelitis
3	Deep ulcer with abscess, osteomyelitis, or joint sepsis
4	Gangrene localized to portion of forefoot or heel
5	Extensive gangrenous involvement of the entire foot

Figure 2: Wagner DM Foot Ulcer Classification

Ulcers (from page 159)

The peri-wound skin appearance should be evaluated and recorded.

Presence of edema, erythema, color changes, and skin temperature should be mentioned within the chart, as well. When concomitant structural deformities such as hammertoes or bunions are present and are contributing factors to the

but to provide the optimal conditions for the natural healing process of wound reparation to proceed. By approaching the treatment of diabetic foot wounds in a step-wise fashion, healing potential will be optimized. The treatments employed during the course of wound care will largely depend on the grade of the wound, its vascularity, and the presence and severity of

Examination of an ulceration should include ulcer length, width and depth.

development or delay in healing of the wound, they need to be fully described and addressed. Neurovascular assessments should be performed regularly to grade and monitor neuropathy and vascular perfusion.

When choosing codes for diabetic wounds, it is imperative that the diagnosis of diabetes is primary. Wound etiologies such as pressure, trauma, and/or vascular insufficiency can also be used, but should be notated secondary to the diagnosis of diabetes. The specificity of ICD-10 requires codes to be used to determine laterality of the wound, location of the wound, and the specific depth of the wound. Steer clear of any codes containing the wording of 'unspecific'. These codes should not be chosen as they will be inadequate for insurance reimbursement. Establishing the primary etiology of the wound as diabetic in nature can allow for the use of certain adjunctive therapies such as cellular and tissue products or hyperbaric oxygen therapy, should the need arise.

Standard of Care

The primary goal in wound care is not for the technical repair of the wound,

infection. It is imperative to approach treatment of diabetic foot wounds with a multidisciplinary care team. These are complicated wounds with multiple etiologies, and numerous co-morbidities can exist in these patients.

Relief of Pressure

Relief of pressure from the area of the wound is the single most important issue that should be addressed upon first presentation. Plantar foot ulcers typically result as a consequence of abnormal foot pressures and repetitive moderate stress encountered by the neuropathic foot while ambulating.¹⁶ Footwear needs to be evaluated, and ill-fitting shoes must be replaced. If the diabetic wound is on the plantar surface of



Figure 4: Maggot (biological) Debridement



Figure 3: Total Contact Cast (TCC)

the foot, some type of pressure-relieving footwear, removable walking boot, or total contact cast to off-load pressure from the foot should be employed (Figure 3).

A crucial part of treatment of diabetic foot wounds is regular debridement. The goal of debridement is the removal of all necrotic, fibrous, and devitalized tissue from the wound bed. It is recommended that unhealthy tissue be sharply debrided to bleeding tissue in order to allow for visualization of the extent of the ulcer and to detect underlying exposed structures or abscesses. If sharp debridement cannot be performed due to increased pain or patient objection, enzymatic, mechanical, biological debridement, or other tissue-removing wound products can be employed (Figure 4).

If ischemia exists, it is imperative to optimize perfusion to achieve a successful outcome, regardless of topical therapies

Continued on page 161

THE DIABETIC FOOT

Ulcers (from page 160)

used. Appropriate vascular and surgical consultations should be obtained when a patient presents with an ischemic ulcer, an abnormal ABI reading is obtained, or a wound fails to progress despite appropriate wound management. Often patients with diabetic foot ulcers need to undergo distal arterial reconstruction to restore adequate blood flow into the limb.

Working closely with a vascular surgeon who performs these revascularization procedures allows for more aggressive foot-sparing treatments and interventions to be undertaken. Hyperbaric oxygen therapy has been used as an adjunctive therapy in diabetic foot wounds

lized, is a common practice when treating severe diabetic foot wounds complicated by abscess and osteomyelitis. Increasing tissue oxygen-

lower extremity amputations and speed ulcer healing rates.²¹ Primary care physicians, doctors of internal medicine, podiatrists,

The primary goal in wound care is to provide the optimal conditions for the natural healing process to occur.

ation with HBOt can accentuate macrophage phagocytosis and increase the effectiveness of bacterial-killing polymorphonuclear cells.¹⁹ Increasing the concentration of oxygen by using HBOt has also been shown to inhibit bacterial growth and potentiate the effectiveness of antibiotic therapy.²⁰

and podiatrists all play an important role. Patient education is paramount. Instruction should include diabetes disease management, proper foot hygiene and inspection, use of appropriate footwear, and the need to seek prompt treatment for any newly-developed lesions. Regular glucose monitoring and foot exams allow clinicians to closely track the progression of diabetes and provide opportunities to reinforce current treatments as well as detect new or impending problems.

Relief of pressure from the area of the wound is the single most important issue that should be addressed upon first presentation.

demonstrating decreased perfusion. The oxygenation of hypoxic tissue is one of the mechanisms by which HBOt can help accelerate wound healing. Studies have shown that over time, HBOt oxygenation of chronic wounds can promote significant neovascularization in as little as 14 treatments (Figure 5).¹⁸

Antibiotic Therapy

When clinical signs of infection are present, proper antibiotic therapy should be initiated. Aerobic and anaerobic cultures should be obtained to effectively choose the appropriate antimicrobial agent. Moderate to severe diabetic foot infections are oftentimes complicated by underlying abscess or osteomyelitis. Deep abscesses may require hospitalization and surgical drainage. When osteomyelitis is advanced, aggressive bone resection followed by four to six weeks of culture-specific antibiotics should be initiated. Obtaining proper infectious disease consultations, especially when intravenous antibiotics will be uti-

Other Considerations

Prevention of recurrent diabetic foot wounds is the key to amputation prevention. A multidisciplinary approach to prevention has been shown to dramatically reduce the rate of

Therapeutic Shoes

Therapeutic shoes coupled with pressure-relieving multi-density insoles have been associated with a significant decrease in development of diabetic foot ulcerations.²² It is the author's current practice

Continued on page 162



Figure 5: Hyperbaric Oxygen Chamber

Ulcers (from page 161)

to have a local pedorthist come into the wound clinic two to three weeks prior to ulcer healing. At this point in time, the process of measuring for accommodative footwear is begun. This allows for direct transfer of the patient into the completed diabetic footwear directly upon healing (Figure 6).

Conclusion

Diabetes is a complicated disease with many serious sequelae. Development of foot ulcerations are very common in patients with diabetes. These patients often fail to detect foot ulcerations until they become large and/or infected. These ulcerations can deteriorate quickly due to the multiple co-morbidities found within this patient population. Prompt and aggressive wound care is key to successful treatment of diabetic foot wounds. Wound healing centers with rigorous and proven protocols to manage these types of ulcerations are the cornerstone of therapy. Con-

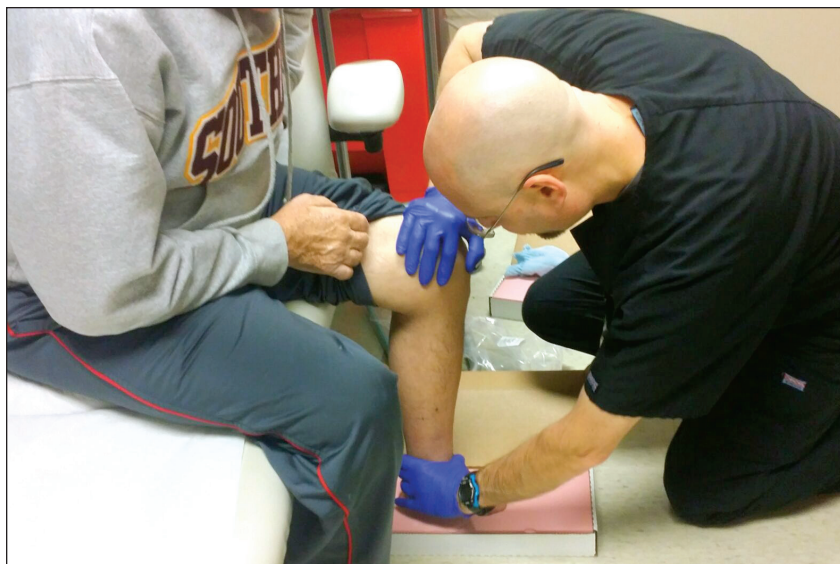


Figure 6: Pedorthic shoe fitting

outcomes. *J Wound Care*. 2015 Sep; 24(9):420-5.

³ Brem H, Sheehan P, Rosenberg HJ, Schneider JS, Boulton AJ. Evidence-based protocol for diabetic foot ulcers. *Plast Reconstr Surg* 2006; Jun; 117 (7Suppl):193S-209S.

⁴ Lavery, LA, Armstrong DG, Wunder-

American Diabetes Association, with endorsement by the American Association of Clinical Endocrinologists. *Diabetes Care*. 2008 Aug;31(8):1679-85.

⁹ Hill MN, Feldman HI, Hilton SC, et al. Risk of foot complications in long-term diabetic patients with and without ESRD: a preliminary study. *ANNAJ*. 1996;23:381-388.

¹⁰ Gunter W, Muller N, Busch M, et al. Diabetic foot syndrome and renal function in type1 and 2 diabetes mellitus show close association. *Nephrol Dial Transplant*. 2001;12:2838-2847.

¹¹ Wattanakit K, Folsom AR, Selvin E, et al. Kidney function and risk of peripheral arterial disease: results from Atherosclerosis Risk in Communities (ARIC) Study. *J Am Soc Nephrol*. 2007;18: 629-636.

¹² Abu-Rumman PL, Armstrong DG, Nixon BP. Use of clinical laboratory parameters to evaluate wound healing potential in diabetes mellitus. *J AM Podiatr Med Assoc*. 2002 Jan;92(1):38-47.

¹³ Lavery LA, Armstrong DG, Peters EJ, Lipsky BA. Probe-to-bone test for diagnosing diabetic foot osteomyelitis: reliable or relic? *Diabetes Care*. 2007 Feb;30(2):270-274.

¹⁴ Edmonds, M. The treatment of diabetic foot infections: focus on ertapenem. *Vasc Health Risk Manag*. 2009; 5:949-963.

¹⁵ Schwegler, B, Stumpe, KD, Stroble, K, Spinass, GA, Von Schulthess, GK, et al. Unsuspected osteomyelitis is frequent in persistent diabetic foot ulcer and better diagnosed by MRI than by 18F-FDG PET or 99mTc-MOAB. *J intern Med*. 2008; 26:99-106.

¹⁶ Rogers LC, Frykberg RG, Armstrong DG et al. The Charcot foot in diabetes. *Di-*

Prevention of recurrent diabetic foot wounds is the patient's responsibility.

trolling infection, maximizing perfusion, regulation of diabetes, and proper off-loading are all essential components needed for healing these difficult wounds. Wound healing centers take the multidisciplinary approach shown to be the hallmark of successful treatment of the diabetic patient. The focus should be on education. An informed patient makes for a more compliant patient. Repeated education of diabetic patients has shown a reduction in amputation rates by 50% or more.²³ **PM**

References

¹ Singh N, Armstrong DG, Lipsky BA. Preventing foot ulcers in patients with diabetes. *JAMA*, 2005 Jan12;293(2):217-28.

² Yosuf MK, Mahadi SI, Mahmoud SM, Widatalla AH, Ahmed ME. Diabetic neuropathic forefoot and heel ulcers: management, clinical presentation and

lich RP, Mohler MJ, Wendel CS, Lipsky BA. Risk factors for foot infections in individuals with diabetes. *Diabetes Care* 2006; 29:1288-93.

⁵ Kim BS, Choi WJ, Baek MK, Kim YS, Lee JW. Limb salvage in severe diabetic foot infection. *Foot Ankle Int* 2011 Jan; 32(1):31-7.

⁶ Rayman G, Vas PR, Baker N, TaylorCG Jr, Gooday C, Alder Al, Donohoe M. The Ipswich Touch Test: a simple and novel method to identify inpatients with diabetes at risk of foot ulceration. *Diabetes Care*. 2011 Jul;34(7):1517-8.

⁷ Ziegler-Graham K, MacKenzie EJ, Ephraim PL, Trivison TG, Boolsmeier R. Estimating the prevalence of limb loss in the United States: 2005 to 2050. *Archives of Physical Medicine and Rehabilitation* 2008;89(3):422-9.

⁸ Boulton AJ, Armstrong DG, Albert SF, et al. Comprehensive foot examination and risk assessment: a report of the task force of the foot care interest group of the

Continued on page 163

THE DIABETIC FOOT

Ulcers (from page 162)

abetes Care. 2011 Sep;34(9):2123-9.

¹⁷ Kim, PJ, Steinberg, JS. Wound care: biofilm and its impact on the latest treatment modalities for ulcerations of the diabetic foot. *Semin Vasc Surg.* 2012 Jun;25(2):70-4.

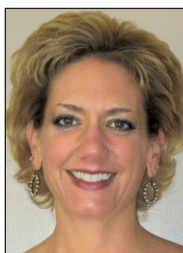
¹⁸ Sanders, AL et al. In vivo effect of hyperbaric oxygen on wound angiogenesis and epithelialization. *Wound Repair and Regeneration.* 2009; 17:179-184.

¹⁹ Hohn DC, MacKay RD, Halliday B, Hunt TK. Effects of O₂ tension on microbicidal function of leukocytes in wounds in vitro. *Surg Forum* 1976;2:133-40.

²⁰ Hunt TK, Linsey M, Grislis H, Sonne M, Jawetz E. The effect of differing ambient oxygen tensions on wound infection. *Ann Surg* 1975;181(1):35-9.

²¹ Holstein P, Ellitsgaard N, Bornefeldt Olsen B, Ellitsgaard V. Decreasing incidence of major amputations in people with diabetes. *Diabetologia* 2000;43(7):844-7.

²² Bus SA, Valk GD, van Deursen RW, et al. The effectiveness of footwear and offloading interventions to prevent and heal foot ulcers and reduce plantar pressure in diabetes: a systemic review. *Diabetes Metab Res Rev* 2008;24(Suppl. 1):S162-S180.



Dr. Cole is an Adjunct Professor and Director of Wound Care Research at Kent State University College of Podiatric Medicine. She also serves as Director of Wound Care Services for Cleveland Regency East Hospital and is the Medical Director at University Hospitals Ahuja Wound Care Center. She is board certified by the American Board of Podiatric Surgery. Her practice focus is on advanced wound care modalities and regenerative medicine. She has published on these topics and speaks nationally and internationally on limb preservation and wound care.

CME EXAMINATION

SEE ANSWER SHEET ON PAGE 165.

1) Which is a true statement regarding diabetic foot ulcers?

- A) They affect millions of Americans.
- B) The frequency is on the rise.
- C) Diabetic foot ulcers have a high recurrence rate.
- D) All of the above.

2) The etiology of diabetic foot ulcers include which of the following?

- A) Increased vascularity to the feet.
- B) Peripheral neuropathy
- C) Decreased plantar foot pressures.
- D) A non-immunocompromised state.

3) What would be an important step in diagnosing and treating a diabetic foot ulcer?

- A) Adequately describing the ulcer characteristics such as size, depth, appearance of the wound base
- B) Ignoring the etiology of the wound because it has no effect on the treatment plan for these patients
- C) Determining if the ulcer is simply neuropathic, ischemic, or neuro-ischemic
- D) Both A and C

4) All statements about the work-up of diabetic foot ulcer patients are true except:

- A) Obtaining an ankle brachial index (ABI) reading to determine vascular perfusion in

the affected extremity is a very helpful value.

- B) Hemoglobin A1C is a useful lab value to determine the long-term effectiveness of the patient's glucose control.
- C) BUN and creatinine levels should also be evaluated to identify patients at risk for chronic kidney disease.
- D) Nutritional deficits have no effect on wound healing and do not need to be both-ered screening for.

5) Examination of an ulceration should include obtaining measurements of the following:

- A) Length of time of debridement.
- B) Ulcer length, width and depth.
- C) Number of steps it takes the patient to get to the restroom.
- D) No measurements need to be taken on a diabetic foot wound exam.

6) All of the following are considered true regarding documentation of diabetic wounds except:

- A) If a debridement is performed, the type of debridement, instrument used, depth of tissue removed.
- B) The character of wound bed pre- and post-debridement, amount of bleeding that

Continued on page 164

occurred, how the patient tolerated the procedure.

C) Drainage amount, character, and odor are notable findings.

D) Including a wound photo in the chart is all that is needed for documentation.

7) The primary goal in wound care is to:

A) Facilitate the technical repair of the wound.

B) Use as many high-cost products as possible.

C) Provide the optimal conditions for the natural healing process to occur.

D) Prolong the patient's healing so they need to make more appointments.

8) What is the single most important issue that should be addressed upon first presentation?

A) All medications that the patient is on

B) Relief of pressure from the area of the wound.

C) Who was the referral source of the patient?

D) What type of insurance coverage the patient has.

9) A crucial part of the successful treatment of diabetic foot wounds includes:

A) Regular debridement

B) Optimizing perfusion

C) Controlling infection

D) All of the above.

10) Prevention of recurrent diabetic foot wounds is:

A) Not at all important

B) Impossible to achieve

C) The key to amputation prevention

D) The patient's responsibility

SEE ANSWER SHEET ON PAGE 165.

The author(s) certify that they have NO affiliations with or involvement in any organization or entity with any financial interest (such as honoraria; educational grants; participation in speakers' bureaus; membership, employment, consultancies, stock ownership, or other equity interest), or non-financial interest (such as personal or professional relationships, affiliations, knowledge, or beliefs) in the subject matter or materials discussed in this manuscript.

PM's CME Program

Welcome to the innovative Continuing Education Program brought to you by *Podiatry Management Magazine*. Our journal has been approved as a sponsor of Continuing Medical Education by the Council on Podiatric Medical Education.

Now it's even easier and more convenient to enroll in PM's CE program!

You can now enroll at any time during the year and submit eligible exams at any time during your enrollment period.

CME articles and examination questions from past issues of *Podiatry Management* can be found on the Internet at <http://www.podiatrym.com/cme>. Each lesson is approved for 1.5 hours continuing education contact hours. Please read the testing, grading and payment instructions to decide which method of participation is best for you.

Please call (631) 563-1604 if you have any questions. A personal operator will be happy to assist you.

Each of the 10 lessons will count as 1.5 credits; thus a maximum of 15 CME credits may be earned during any 12-month period. You may select any 10 in a 24-month period.

The Podiatry Management Magazine CME program is approved by the Council on Podiatric Education in all states where credits in instructional media are accepted. This article is approved for 1.5 Continuing Education Contact Hours (or 0.15 CEU's) for each examination successfully completed.

PM's privacy policy can be found at <http://podiatrym.com/privacy.cfm>.

This CME is valid for CPME-approved credits for three (3) years from the date of publication.

Enrollment/Testing Information and Answer Sheet

Note: If you are mailing your answer sheet, you must complete all info. on the front and back of this page and mail with your credit card information to: **Program Management Services, P.O. Box 490, East Islip, NY 11730.**

TESTING, GRADING AND PAYMENT INSTRUCTIONS

(1) Each participant achieving a passing grade of 70% or higher on any examination will receive an official computer form stating the number of CE credits earned. This form should be safeguarded and may be used as documentation of credits earned.

(2) Participants receiving a failing grade on any exam will be notified and permitted to take one re-examination at no extra cost.

(3) All answers should be recorded on the answer form below. For each question, decide which choice is the best answer, and circle the letter representing your choice.

(4) Complete all other information on the front and back of this page.

(5) Choose one out of the 3 options for testgrading: mail-in, fax, or phone. To select the type of service that best suits your needs, please read the following section, "Test Grading Options".

TEST GRADING OPTIONS

Mail-In Grading

To receive your CME certificate, complete all information and mail with your credit card information to: **Program Management Services, P.O. Box 490, East Islip, NY 11730. PLEASE DO NOT SEND WITH SIGNATURE REQUIRED, AS THESE WILL NOT BE ACCEPTED.**

There is **no charge** for the mail-in service if you have already enrolled in the annual exam CME program, and we receive this exam during your current enrollment period. If you are not enrolled, please send \$27.00 per exam, or \$219 to cover all 10 exams (thus saving \$51 over the cost of 10 individual exam fees).

Facsimile Grading

To receive your CME certificate, complete all information and fax 24 hours a day to 1631-532-1964. Your CME certificate will be dated and mailed within 48 hours. This service is available for \$2.50 per exam if you are currently enrolled in the annual 10-exam CME program (and this exam falls within your enrollment period), and can be charged to your Visa, MasterCard, or American Express.

If you are *not* enrolled in the annual 10-exam CME program, the fee is \$27 per exam.

Phone-In Grading

You may also complete your exam by using the toll-free service. Call 1-800-232-4422 from 10 a.m. to 5 p.m. EST, Monday through Friday. Your CME certificate will be dated the same day you call and mailed within 48 hours. There is a \$2.50 charge for this service if you are currently enrolled in the annual 10-exam CME program (and this exam falls within your enrollment period), and this fee can be charged to your Visa, Mastercard, American Express, or Discover. If you are not currently enrolled, the fee is \$27 per exam. When you call, please have ready:

1. Program number (Month and Year)
2. The answers to the test
3. Credit card information

In the event you require additional CME information, please contact PMS, Inc., at **1-631-563-1604.**

ENROLLMENT FORM & ANSWER SHEET

Please print clearly...Certificate will be issued from information below.

Name _____ Email Address _____

Please Print: FIRST MI LAST

Address _____

City _____ State _____ Zip _____

Charge to: Visa MasterCard American Express

Card # _____ Exp. Date _____ Zip for credit card _____

Note: Credit card is the only method of payment. Checks are no longer accepted.

Signature _____ Email Address _____ Daytime Phone _____

State License(s) _____ Is this a new address? Yes No

Check one: I am currently enrolled. (If faxing or phoning in your answer form please note that \$2.50 will be charged to your credit card.)

I am not enrolled. Enclosed is my credit card information. Please charge my credit card \$27.00 for each exam submitted. (plus \$2.50 for each exam if submitting by fax or phone).

I am not enrolled and I wish to enroll for 10 courses at \$219.00 (thus saving me \$51 over the cost of 10 individual exam fees). I understand there will be an additional fee of \$2.50 for any exam I wish to submit via fax or phone.

Over, please

EXAM #9/18
Diabetic Foot Ulcers
(Cole)

Circle:

- | | |
|------------|-------------|
| 1. A B C D | 6. A B C D |
| 2. A B C D | 7. A B C D |
| 3. A B C D | 8. A B C D |
| 4. A B C D | 9. A B C D |
| 5. A B C D | 10. A B C D |

Medical Education Lesson Evaluation

Strongly agree [5]	Agree [4]	Neutral [3]	Disagree [2]	Strongly disagree [1]
--------------------------	--------------	----------------	-----------------	-----------------------------

- 1) This CME lesson was helpful to my practice ____
- 2) The educational objectives were accomplished ____
- 3) I will apply the knowledge I learned from this lesson ____
- 4) I will make changes in my practice behavior based on this lesson ____
- 5) This lesson presented quality information with adequate current references ____
- 6) What overall grade would you assign this lesson?
A B C D
- 7) This activity was balanced and free of commercial bias.
Yes ____ No ____
- 8) What overall grade would you assign to the overall management of this activity?
A B C D

How long did it take you to complete this lesson?

____ hour ____ minutes

What topics would you like to see in future CME lessons?
Please list :
